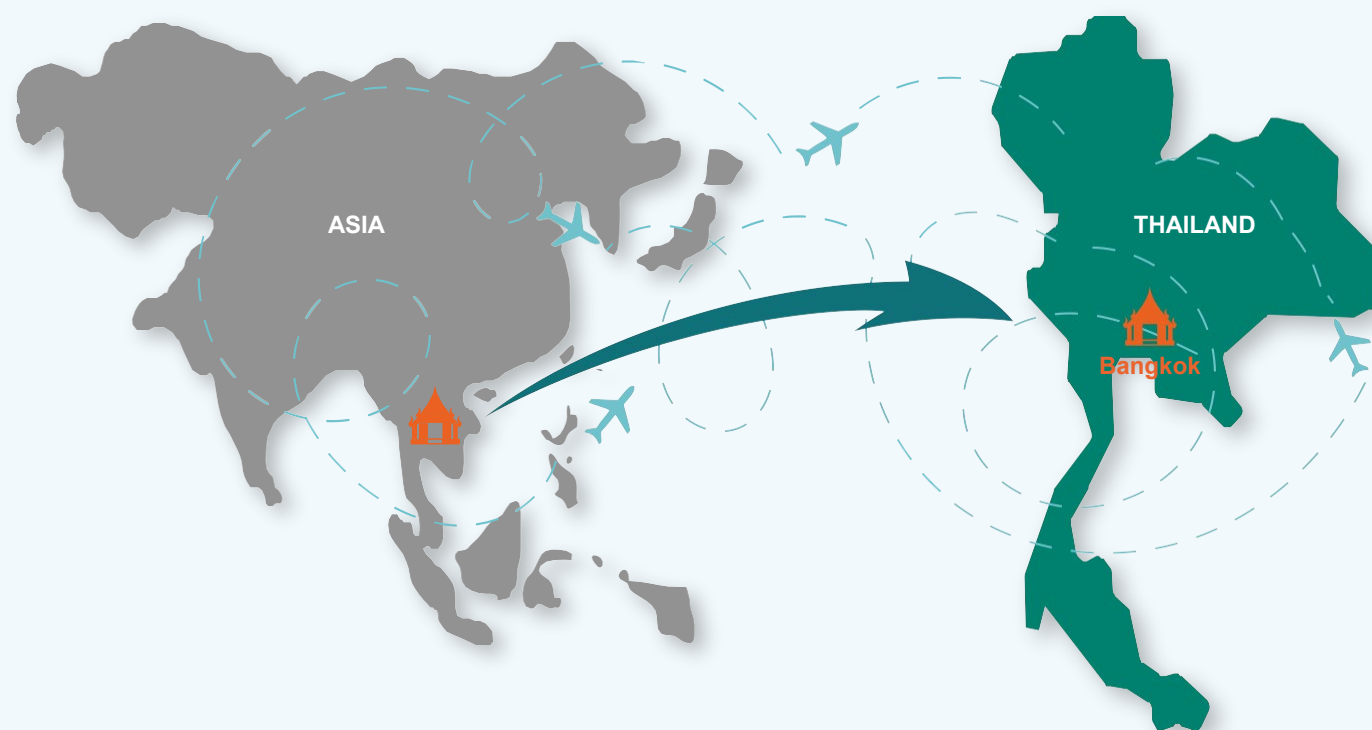


## Where is Thailand ?



## THAILAND



Thailand is a Kingdom and the Capitol is Bangkok



Thailand has a population of 69 Million people. 159% of the population has a mobile phone.



GDP was 529 Billion USD (2019)  
The Thai Currency is call Thai Baht

## TRADE BETWEEN THAILAND AND WORLDWIDE BY VALUE

### Top export trading partners

- United States
- China
- Japan
- Hong Kong
- Malaysia
- Australia
- Indonesia

### Top import trading partners

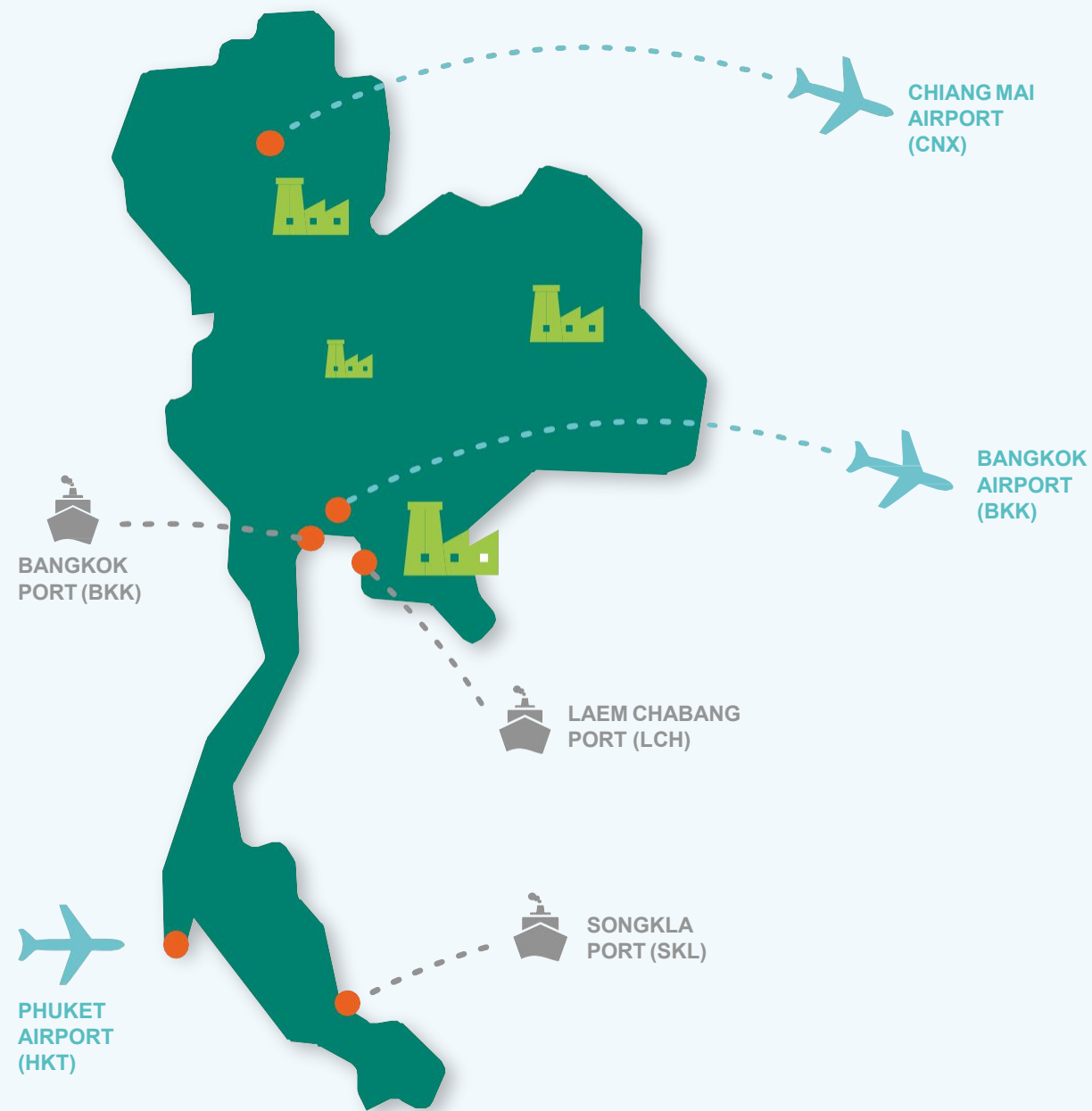
- China
- Japan
- United States
- Malaysia
- Korea
- Taiwan
- Singapore
- UAE
- Indonesia

EXPORT TO WW  
Value in 2019  
245 Billion USD

IMPORT FROM WW  
Value in 2019  
239 Billion USD



## Thailand infrastructure and Industry Zones



## Thailand cross border hub for South East Asia



Thailand has modern and improved infrastructure with excellent road connections to neighboring countries in Indochina and South Asia.



Thailand has 3 major seaports Bangkok PAT, Laem Chabang and Songkla port in Southern Thailand.



Thailand has excellent road network. At the heart of South East making it the ideal hub for cross border deliveries to its neighbouring countries.



Thailand has wide variety of industries, but it especially invested in Automotive and is known as the Detroit of the East.

Our team Speaks 5  
languages



Years experience in  
global freight  
forwarding

Licensed Customs Broker  
and Counter Service

Meet the team



Team [Freightzen Logistics](#)  
Bangkok, Thailand.



[Jimmy Jensen](#)  
Managing Director  
Speaks: Danish, English, Thai, German  
Function: Management, Sales



[Peter Christensen](#)  
Director  
Speaks: Danish, English  
Function: Ocean Procurement, Sales



[Piyawan Phophiphat](#)  
Head of Sea freight Export  
Speaks: Thai, English  
Function: Sea freight Export



[Warissara Chaengkla](#)  
Head of Sea freight Import  
Speaks: Thai, English  
Function: Sea freight Import