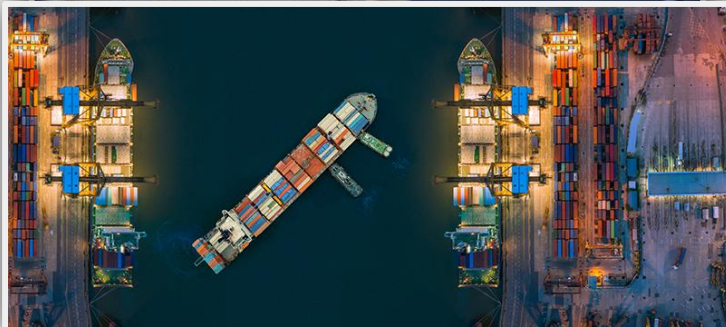




Empowering In-Transit Visibility

In-transit visibility data and **insights** for supply chain innovators around the globe

January 2022



tive About Us

Corporate Information

Tive, Inc.

Founded in 2015

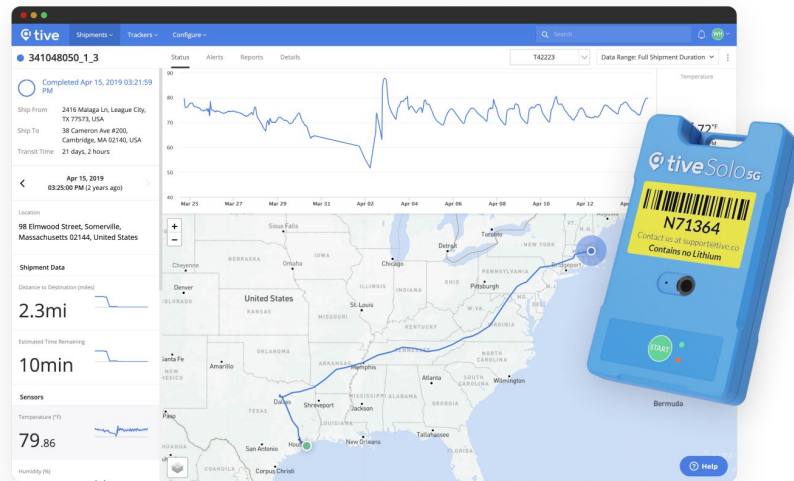
www.tive.com
sales@tive.com

Corporate Locations

Headquarters:
Boston, Massachusetts, USA

Other Offices:
Hollywood, Florida, USA
Prishtina, Kosovo
London, England

Tive Depots: USA, Netherlands, Mexico,
Turkey, Singapore, Japan, and Australia.








Customers



Why Tive?

Because multiple stakeholders need to know location & condition of the cargo

- Temperature 
- Shock 
- Light 
- Humidity 
- ETA
- Geofences: Arrival/Departure 
- Idle Time
- Route Deviations

tive Problems We're Solving

Ensure



Proper Temperature/Humidity/Shock



Accurate data for claims



100 % Visibility Compliance

Reduce



Delays, Wasted Time Calling Drivers



Time spent solving problems: Damage, Tampering, Shortage, or Loss



Theft / Stolen Loads!

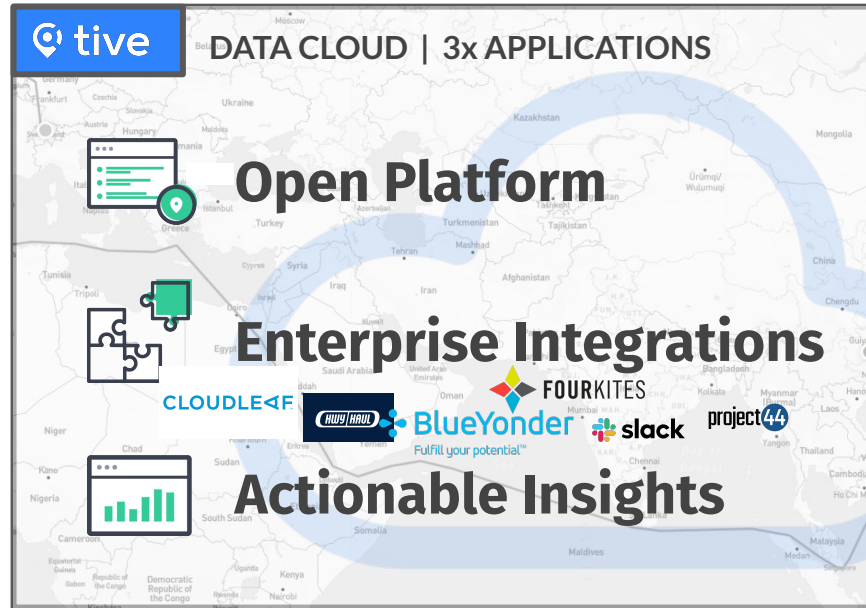
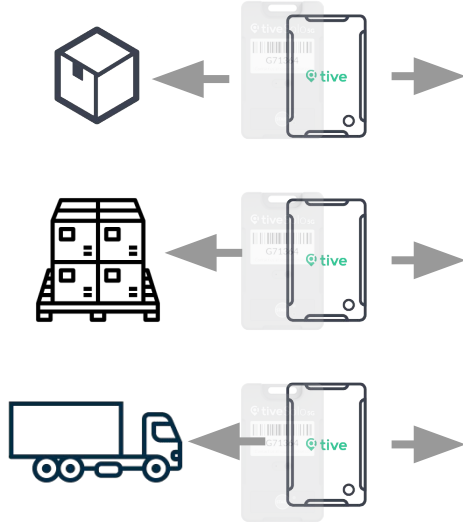


A Complete Visibility Solution



PO# / SO#
ASN / BOL
SKU, Load #

Trackers



APIs / Webhooks





Differentiator: Hyper Accurate Location



5G / 4G/LTE 2G

Cell Triangulation

Wifi

GPS

Know the exact
location of your loads
not just an idea.



tive Trackers



	Solo 5G	Solo 2G	Beacons
Connectivity	5G, 4G/LTE, and 2G	2G	via Flagship or Solo 5G
Location	Hi-Precision Wi-Fi, GPS Cell Triangulation	Cell Triangulation and Wi-Fi Positioning	-
Condition Monitoring	Temperature Humidity Package Opened Shock/Drop (up to 8G) *Orientation	Temperature Package Opened	Temperature Proximity
Temperature Range	-20°C to 60°C NIST Traceable	-20°C to 60°C NIST Traceable	-40°C to 60°C NIST Traceable
Battery Life	1-3 months New Non-Lithium	1-2 months	24+ months
Reverse Logistics	Optional	Optional	Optional



Visualize and Monitor Your Shipments

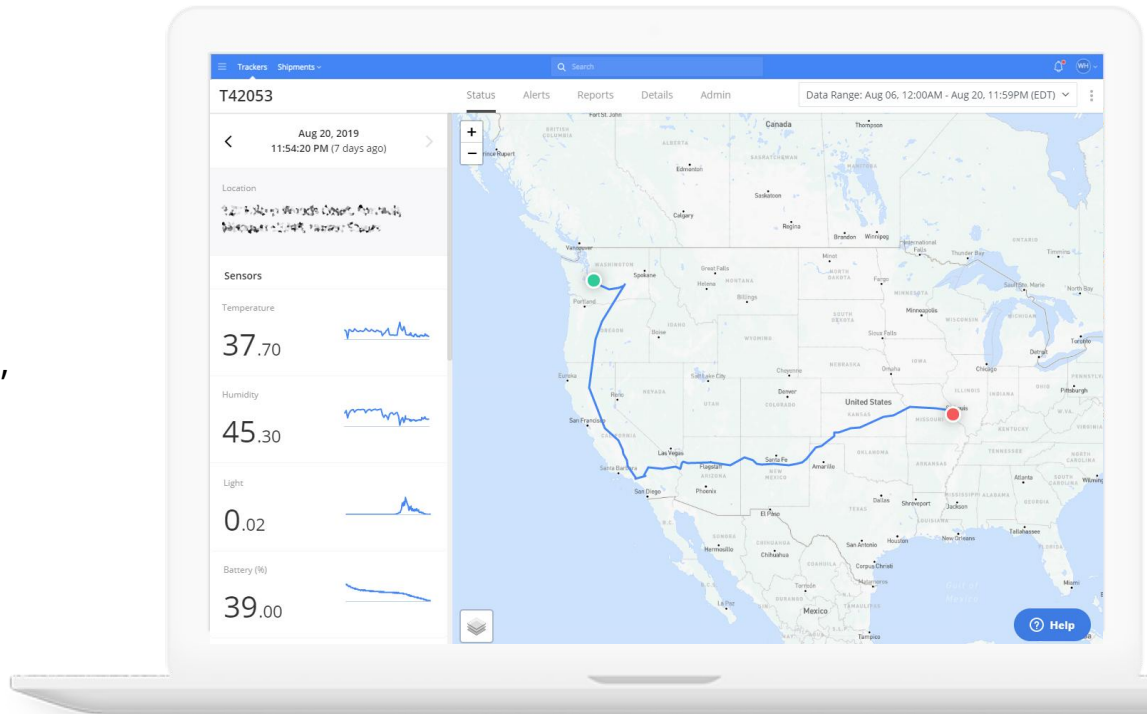
Multi-Modal Visibility across Ocean and Land

Shipment Analysis: Scorecards, KPIs, On-Time Delivery, Alerts

Provide Your Customers with Visibility Today

Tools for Auditing and Record Keeping

Actionable Alerts
(Email, SMS, API, or Webhook)



tive Multi-Modal

Visualize and Monitor Your Shipments



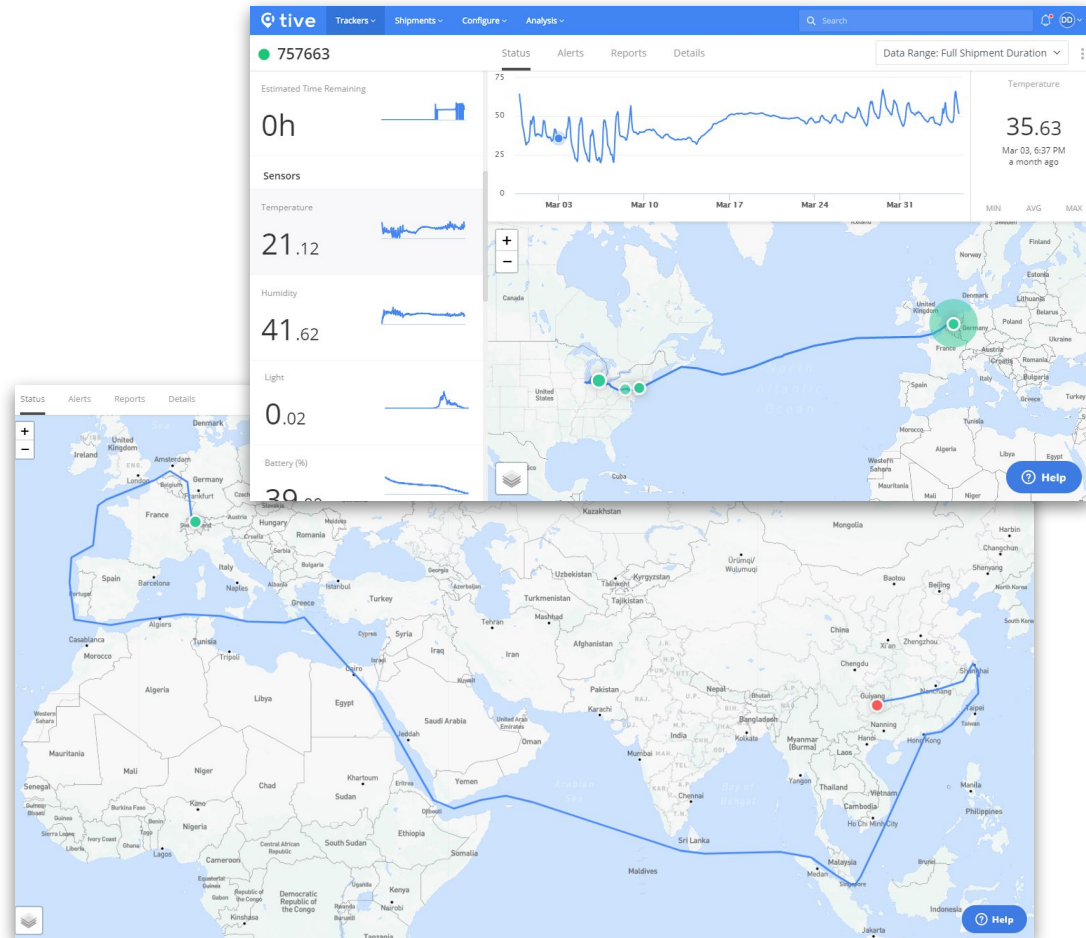
Multi-Modal Visibility across Ocean and Land

Shipment Analysis: Scorecards, KPIs, On-Time Delivery, Alerts

Provide Your Customers with Visibility Today

Tools for Auditing and Record Keeping

Actionable Alerts (Email, SMS, API, or Webhook)



tive KPI's & Scorecards

Visualize and Monitor Your Shipments

Multi-Modal Visibility across Ocean and Land

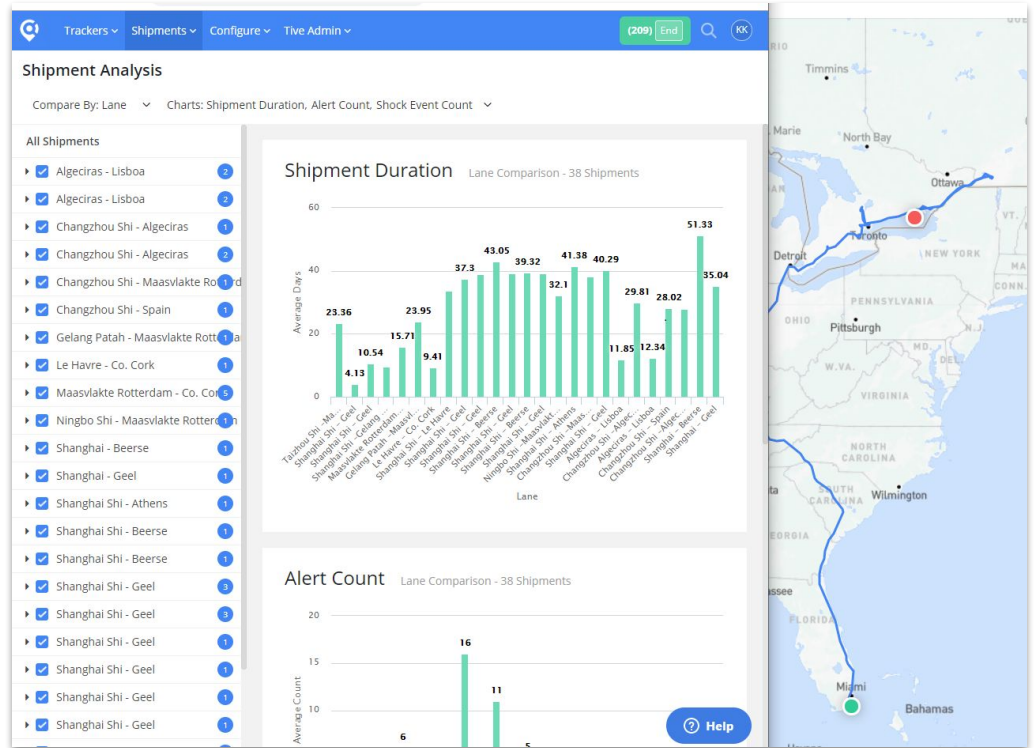


Shipment Analysis: Scorecards, KPIs, On-Time Delivery, Alerts

Provide Your Customers with Visibility Today

Tools for Auditing and Record Keeping

Actionable Alerts
(Email, SMS, API, or Webhook)



tive Customer Visibility

Visualize and Monitor Your Shipments

Multi-Modal Visibility across Ocean and Land

Shipment Analysis: Scorecards, KPIs, On-Time Delivery, Alerts



Provide Your Customers with Visibility Today

Tools for Auditing and Record Keeping

Actionable Alerts (Email, SMS, API, or Webhook)

Share Shipment

Link Sharing ⓘ

Anyone with link can access

<https://platform.tive.io/shared/shipment/735DEF40-AC19-415C-A33D> Copy

Done

your logo

Shipment-ID-123

T41335 Data Range: Full Shipment Duration

Completed Sep 23, 2019 12:16:49 AM

Ship From: 2800 Woodfield Dr, Arlington, MA 02454, USA

Ship To: 1451 Denison Dr, North Andover, MA 01857, USA

Transit Time: 2 days, 2 hours

Sep 23, 2019 12:08:11 AM (4 months ago)

Location: 60 Woodfield Dr, Arlington, Massachusetts 02454, United States

Shipment Data

A map showing the shipment route from Montreal, Quebec to New York, New York. The route is highlighted in blue and passes through Burlington, Vermont and Albany, New York. A blue circle with a white dot is centered on New York, New York. The map includes labels for various cities and states: Quebec, Maine, New Brunswick, Vermont, New Hampshire, Massachusetts, New York, Connecticut, and New Jersey.

Custom Tracking Site

Visualize and Monitor Your Shipments

Multi-Modal Visibility across Ocean and Land

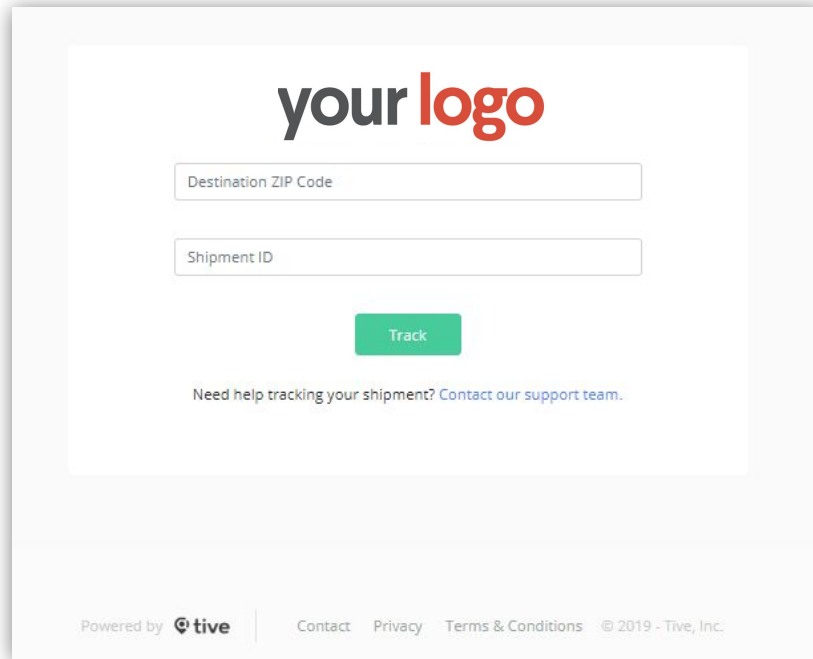
Shipment Analysis: Scorecards, KPIs, On-Time Delivery, Alerts




Provide Your Customers with Visibility Today

Tools for Auditing and Record Keeping

Actionable Alerts
(Email, SMS, API, or Webhook)



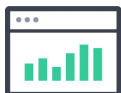
The screenshot shows a web interface for tracking a shipment. At the top center, it says "your logo" in a bold, sans-serif font, with "your" in black and "logo" in red. Below this are two input fields: "Destination ZIP Code" and "Shipment ID". A green button labeled "Track" is positioned below the input fields. At the bottom of the form area, there is a link: "Need help tracking your shipment? [Contact our support team.](#)". The footer of the page includes "Powered by ", "Contact", "Privacy", "Terms & Conditions", and "© 2019 - Tive, Inc."

Visualize and Monitor Your Shipments

Multi-Modal Visibility across Ocean and Land

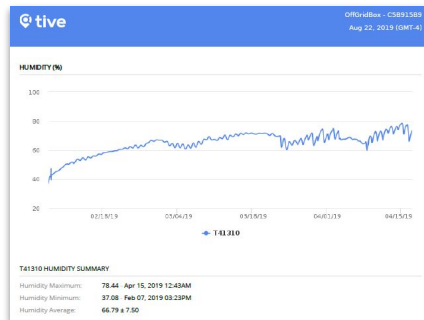
Shipment Analysis: Scorecards, KPIs, On-Time Delivery, Alerts

Provide Your Customers with Visibility Today



Tools for Auditing and Record Keeping

Actionable Alerts
(Email, SMS, API, or Webhook)



tive
Aug 22, 2019 (GMT-4)

SHIPMENT DETAILS

Shipment Name: ◆◆◆◆◆ Tracker: T41310 Scheduled Departure: Feb 08, 2019 02:39PM Actual Departure: Feb 07, 2019 03:11PM Scheduled Delivery: Apr 08, 2019 12:00PM Actual Delivery: Apr 16, 2019 11:59PM	Completed: Apr 16, 2019 11:59PM Transit Time: 2 months Distance Traveled: 7699 mi Distance Remaining: 93 mi Total Distance: 7793 mi
---	--

LOCATION

Start Location: **13 Via del Tramario, Arezzo, Toscana 52100, Italy**
Feb 07, 2019 03:23PM

End Location: **Unnamed Road, Nord-Kivu, Democratic Republic of the Congo**
Apr 16, 2019 11:20PM

T41310 PATH

ALERT SUMMARY

NO ALERTS TRIGGERED FOR THIS REPORT PERIOD.

WWW.TIVE.CO | SUPPORT@TIVE.CO PAGE 1 OF 12 tive

Visualize and Monitor Your Shipments

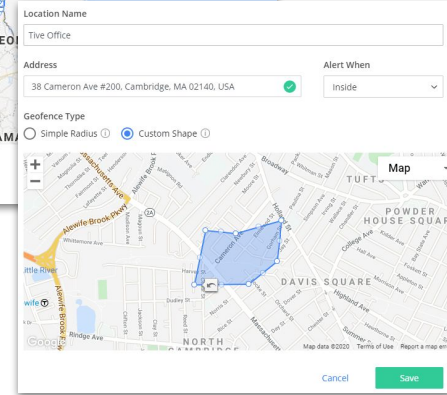
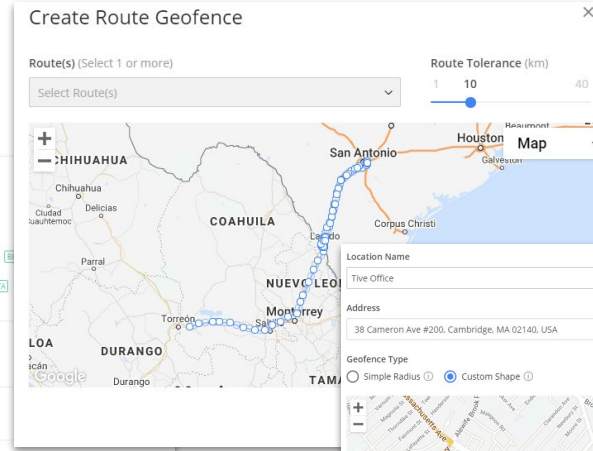
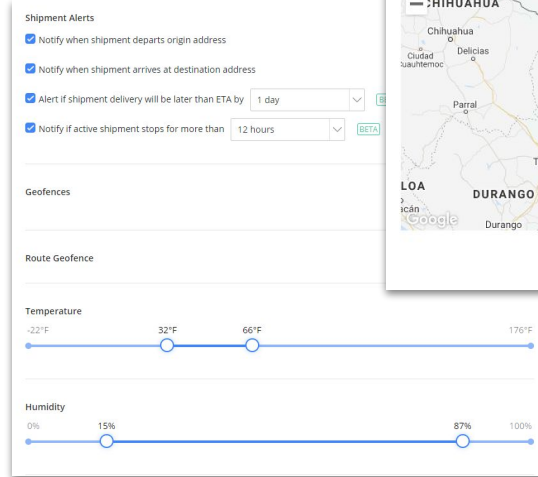
Multi-Modal Visibility across Ocean and Land

Shipment Analysis: Scorecards, KPIs, On-Time Delivery, Alerts

Provide Your Customers with Visibility Today

Tools for Auditing and Record Keeping

Actionable Alerts
(Email, SMS, API, or Webhook)



- Temperature
- Shock
- Light
- Humidity
- ETA
- Geofences: Arrival/Departure
- Idle Time
- Route Deviations





Differentiator - It's about Saving the Shipment!

Temperature Tracking



- The Tive team will manage and take action on all of your organization's temperature alerts based on agreed upon protocols
- Lowers your instances of temperature rejections
- Reduces the number of emails in your inbox



Route Deviation

- Geofences are created based on your defined route.
- The Tive team will monitor the drivers path and notify you or your carriers dispatch team if a route deviation is detected.
- Ideal for oversized, high value, custom critical and escorted loads.



24/7

Managed
Services

Security Monitoring

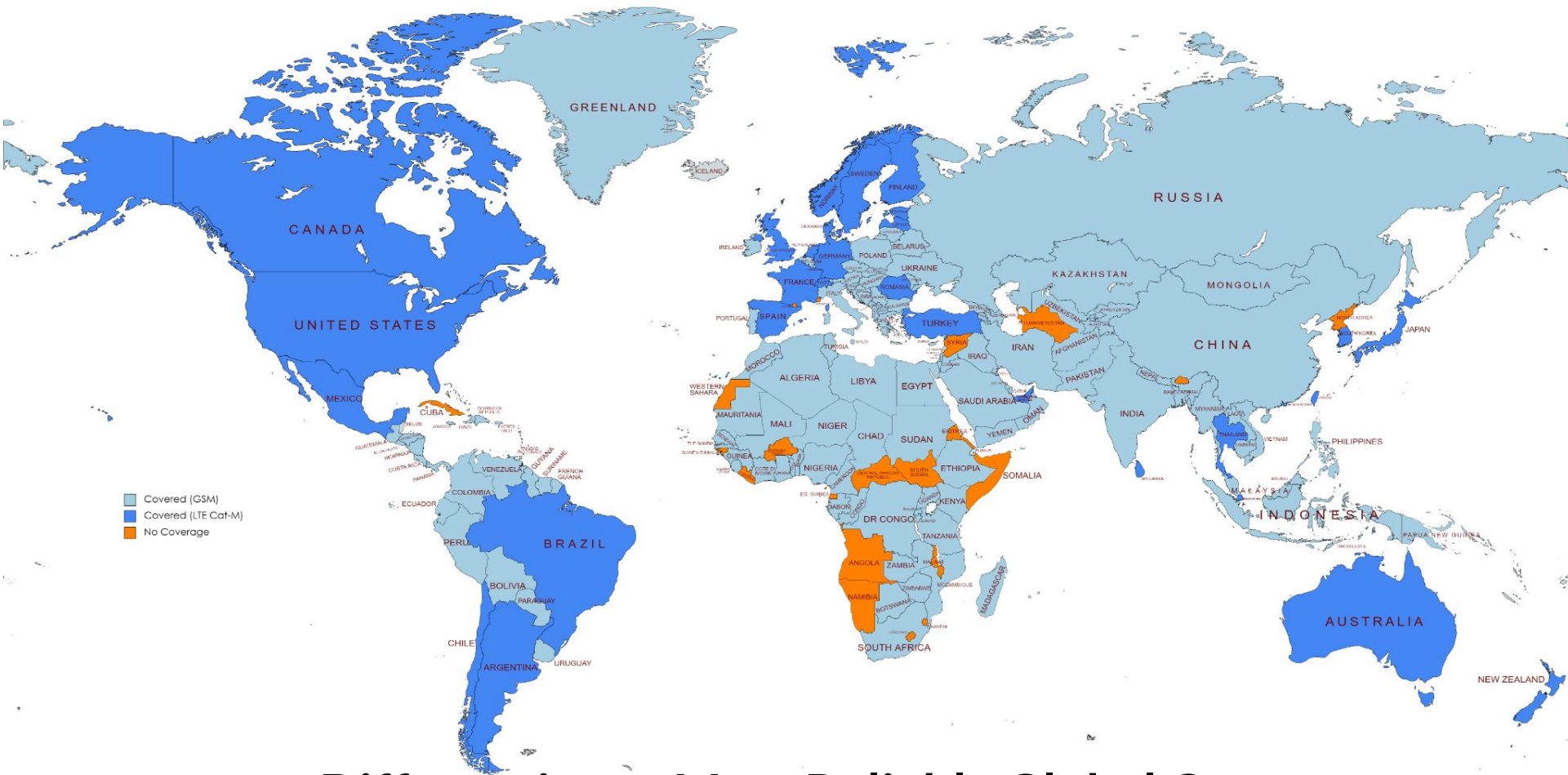
- With Tive tracker light alerts, our Managed Services staff will monitor your trailer or container door open events.
- In the event of an unauthorized security breach our team will contact all relevant parties and law enforcement if requested.



On Time Delivery

- Carrier ETA updates provided helping prevent missed appointments
- Advance notice of late deliveries allowing you to manage exceptions
- Review Carrier Scorecards for on Time Performance and additional KPI's





Airline Approvals

[Latest updates](#)

#	Airlines	TT-7000 (Solo 5G)	TT-7100 (Non-Lithium)	TT-4000 (Flagship)
1	Aerounion	✓		✓
2	Air Bridge	✓	✓	
3	Air Canada	✓		✓
4	Air China	✓		✓
5	All Nippon Airways (ANA)	✓	✓	✓
6	Alaska Airlines		✓	
7	American Airlines	✓	✓	✓
8	Amerijet International	✓		✓
9	Asiana	✓		
10	Atlas Air	✓		
11	Avianca	✓		✓
12	British Airways	✓		
13	CAL Cargo Airlines	✓	✓	✓
14	Cargolux Airlines	✓	✓	
15	Cargolux Airlines Italia	✓	✓	
16	Cathay Pacific Cargo	✓	✓	✓
17	Cathay Dragon	✓	✓	✓
18	China Airlines		✓	
19	China Eastern		✓	
20	China Southern		✓	

#	Airlines	TT-7000 (Solo 5G)	TT-7100 (Non-Lithium)	TT-4000 (Flagship)
21	Delta	✓	✓	✓
22	Edelweiss Air	✓	✓	✓
23	Emirates	✓		
24	FinnAir	✓	✓	
25	Korean Air	✓	✓	✓
26	Japan Airlines	✓		✓
27	LATAM	✓		
28	Malaysia Airlines	✓		
29	Nippon Cargo Airlines	✓		✓
30	Polar Air Cargo (LOT)	✓		
31	Polish Airlines	✓		
32	Qatar	✓		
33	Royal Jordanian		✓	
34	Saudi Arabian Airlines	✓		
35	Southern Air	✓		
36	Southwest	✓	✓	✓
37	Singapore Airlines	✓		✓
38	Swiss Cargo	✓	✓	✓
39	Turkish Airlines	✓	✓	✓
40	United		✓	
41	UPS	✓	✓	✓



Tive's Green Program



Return 5 trackers, receive credit
for 1 free tracker

Benefits of Tive

- **Save the shipment!**
 - Reduce rejected loads
 - Reduction in theft claims
 - Identify and eliminate systemic causes of damage to deliveries
- **Improve customer satisfaction**
 - Anticipate and proactively address customer delivery problems
 - Permanently solve problems instead of fire-fighting based on root cause analysis of supply chain disruptions
- **Reduce customer service and expediting costs**
 - Prevent angry customer calls
 - Lower expediting costs by anticipating and preventing inbound delays
- **Increase order lead time accuracy**
 - Adjust lead times based on actual data on delivery routes



The Markets We Serve

Inbound & Outbound Real-Time In-Transit
Visibility



Pharma & Healthcare



Perishables



High Value & Risk



LSPs





Thank You



E-Mail: partners@tive.com

Web: www.tive.com

Address: 56 Roland Street, Suite 100A, Boston, MA 02129-1243, USA