

# PRESENTATION



CONSIDER IT DONE.





# T.P.G. - Headquarter info

## Slovenia

- T.P.G. Agency – Head Office KOPER
- 25 employee
- Location in Koper close to the port
- Dedicated and flexible stuff





# T.P.G. - Branch offices

## Croatia

- T.P.G. Agency – **Branch Office RIJEKA**
- 10 employee
- Location in Rijeka close to the port
- Young , flexible team, well experienced in logistics, forwarding and warehousing
- Specialist in container transport organisation, seafreight and inland transportation with general cargo and temperature controlled cargo



## Serbia

- T.P.G. Agency – **Branch Office BEOGRAD**
- 6 employees, specialized in forwarding activity
- Good connections/ relations with the Port Authority (Luka Beograd)
- Strategic point for barging distribution to North East and East Europe (via Danube River)
- Specialized in forwarding activities, in particular for the Serbian domestic market



# T.P.G. - Branch offices

## Montenegro

- T.P.G. Agency – **Branch Office BAR**
- 2 employees good connected with the local port Authorities (Luka Bar) and Customs Authorities
- Strategic and natural port for connecting Serbia, Montenegro, Kosovo and Balkans to the Med and the rest of the World



## Hungary

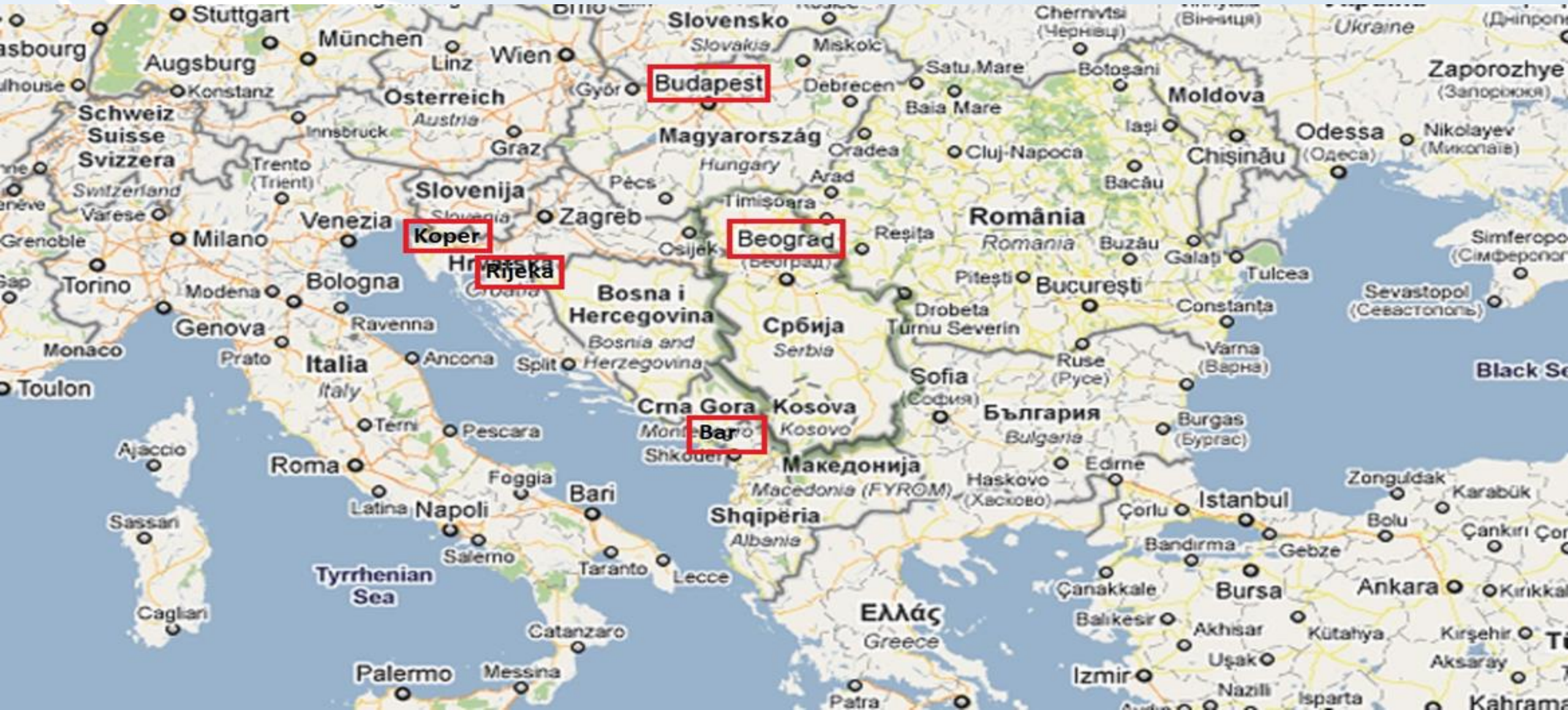
- T.P.G. Logistics – **Branch Office Budapest**
- 7 employee
- Specialized in Freight Forwarding agency and logistics solution for Hungarian market and neighbors





# T.P.G. Agency

## Location Map





# T.P.G. Agency

## Agency activities:

- Representing world known carriers
- Acting as agent for Tramp and Cruise vessels
- Acting as agents for project cargo vessels
- Doing agency for private Yacht owners
- Chartering at Port of Koper, Rijeka, Bar
- Acting as agent for Liner vessels.



# **T.P.G. Agency - full support from door to door**



**EXPERIENCE**  
In seafreight  
Logistics



**market and**  
**Seafreight**  
**KNOW-HOW**



**PROFESSIONAL**  
**& DEDICATED STAFF**  
offering quick  
service

**CUSTOMS**  
**CLEARANCE,**  
**TRANSIT „T1“**



**WAREHOUSING &**  
**DISTRUBUTION**



**ONFOWARDING**  
**SERVICE**  
by truck  
rail



# T.P.G. Agency / Container experience

## Activities:

- Arranging stuffing, lashing
- Port Agents
- Vessels Customs clearance
- Arranging ENS
- Cargo Customs clearance if required
- Inland transportation

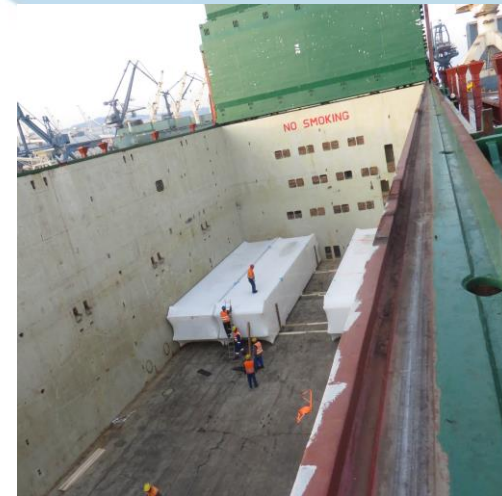
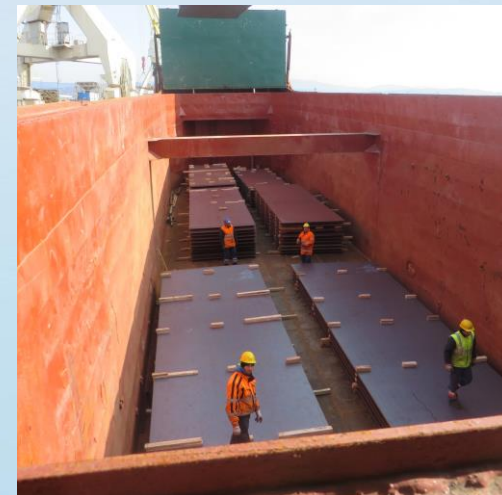




# T.P.G. Agency / Break bulk experience

## Activities:

- Port Agents
- Vessels Customs clearance
- Arranging ENS
- Cargo Customs clearance if required
- Inland transportation





# T.P.G. Agency / RO – RO experience

## Activities:

- Arranging stuffing, lashing
- Arranging inspection FPR, LPR
- Issuing EX1 for new vehicles
- Customs clearance if required
- Inland transportation

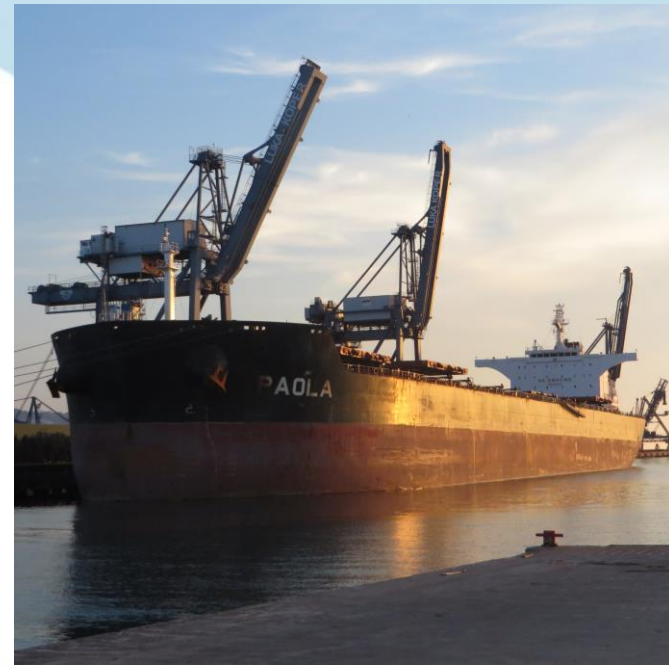
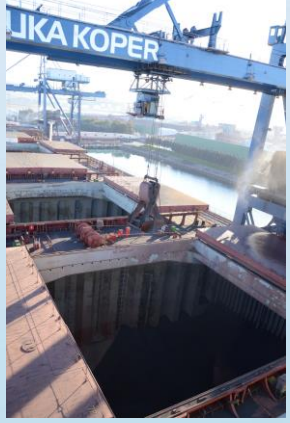




# T.P.G. Agency / Bulk experience

## Activities:

- Port Agents
- Vessels Customs clearance
- Arranging ENS





# Pre-carriage advantages and benefits from Koper Port

## AUSTRIA

South Austria (Graz, Villach, Klagenfurt) **30% cheaper** than From North Ports and **TT of 4 hours**

## HUNGARY

All Hungary cheaper **By 30-40%** and with **TT of max 12 hours** truck and **1 day** rail

## SLOVAKIA

All Slovakia cheaper **by 10-30%** and **with TT of max 12 hours** by truck and **2 days** with rail



## GERMANY

Munich area cheaper **by 10-20%** than from North Ports and **TT of max 8 hours** with truck and **1 day** by rail

## CROATIA / SERBIA / BIH...

Cheaper **by 50-60%** than From North or Genova and with **TT of max 12 hours** with truck and **1 day** with rail

## NORTH EAST ITALY

Cheaper comparing Genova **by 20-30%** with truck and **TT of max 5 hours**



# LUKA KOPER – PORT OF KOPER

Central Europe via Slovenia > SHORTER > SMARTER > PARTNER





# MULTI-PURPOSE PORT



## CONTAINERS

The largest terminal in the Adriatic



## CARS AND RO-RO

Among top terminals in the Med



## BREAK BULK

Diversity of products is the motto



## PERISHABLES

Over 50 years of experience



## COAL AND IRON ORE

Gateway for power and steel industry supply



## PROJECT CARGOES

Big cranes and experienced staff



## ALUMINA AND OTHER MINERALS

Specific facilities for raw materials



## TIMBER

Top timber terminal in the region



## LIVESTOCK

Export and staging point for cattle and sheep



## LIQUID BULK

Handling fuels, chemicals and vegetable oils



## CEREALS AND FODDER

Grains, seeds, soya and other agro-food products

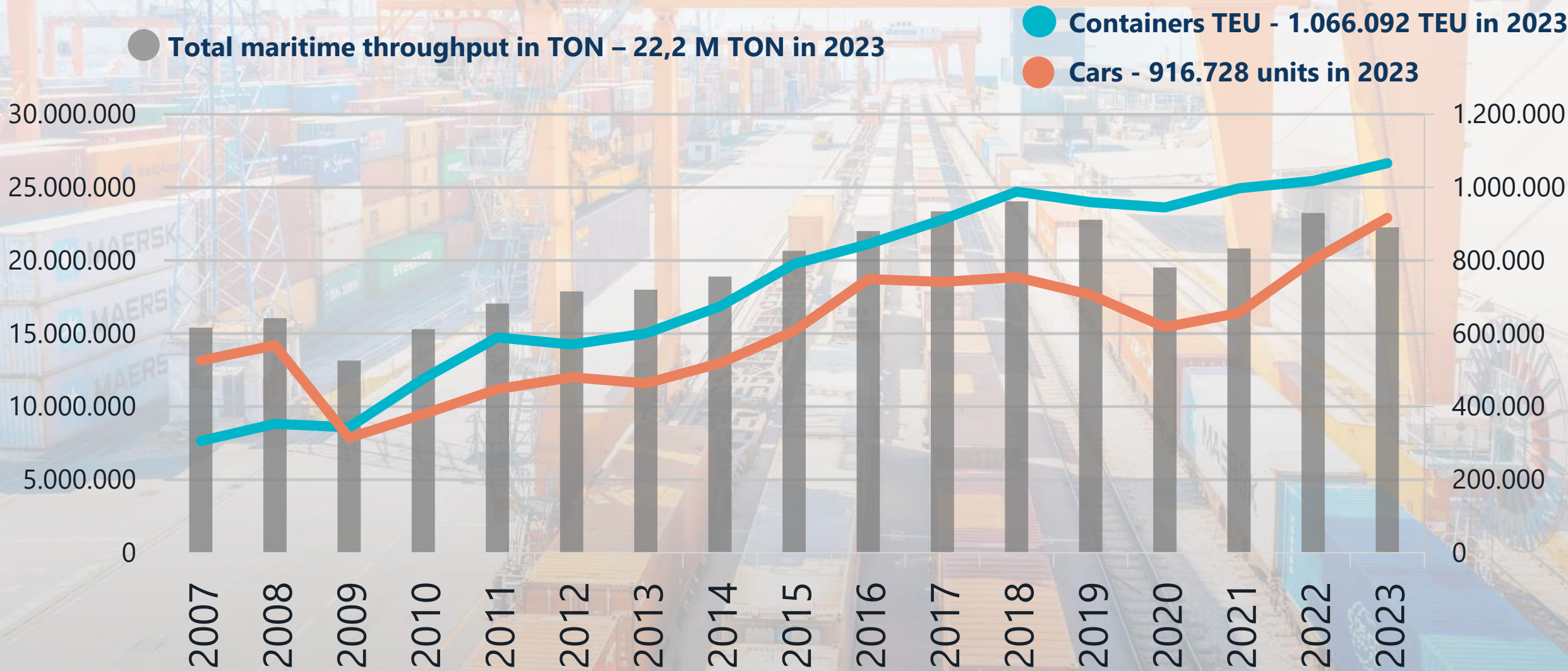


## PASSENGERS

Terminal located just 200 m from old city center



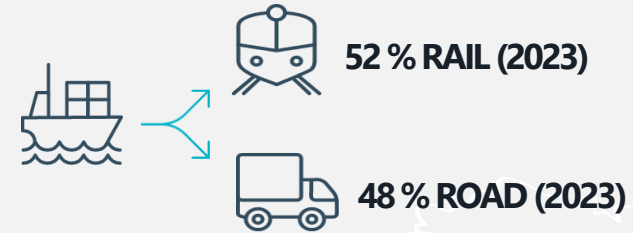
# MARITIME THROUGHPUT HISTORY





# HINTERLAND MARKETS

## MODAL SPLIT





# CONTAINER TERMINAL



2x NEW Truck gate

DEPO area incl. PTI slots & Repair shop

3 x panamax cranes

4 x postpanamax cranes

4 x Super-postpanamax cranes

5 railtracks of 700 m  
4 RMGs

27 RTG & eRTG  
on the yard

694,5 m  
operative quay



# DIRECT CONTAINER SERVICES FROM THE FAR EAST

## 2M Alliance



## Ocean Alliance



## Tailwind Shipping Lines



Koper as the only port of call in the Adriatic

Koper as 1st port of call in the Adriatic





LUKA KOPER CONTAINER  
TERMINAL

TRAFFIC IN TEU-s                      YEAR 2023

OWNER OF CONT.	JANUARY	FEBRUARY	MARCH	APRIL	MAY	JUNE	JULY	AUGUST	SEPTEMBER	OCTOBER	NOVEMBER	DECEMBER	TOTAL	FULL	EMPTY
TOTAL	88.250	83.672	105.743	91.543	89.495	96.244	87.504	84.935	84.641	94.277	84.856	74.934	1.066.093	861.665	204.428
													100%	81%	19%
MAERSK LINE, SEALAND	27.514	18.251	32.956	24.772	23.474	25.039	21.785	23.671	20.082	29.006	22.425	21.606	290.581	246.882	43.699
CMA CGM	21.201	24.782	25.539	24.994	21.932	23.807	20.365	22.061	23.458	22.526	22.768	16.632	270.064	229.079	40.985
MSC	12.202	10.039	16.422	15.049	16.525	15.708	17.441	13.371	15.156	16.266	10.678	11.439	170.296	135.232	35.065
COSCO	8.026	7.400	9.685	9.043	6.338	8.305	7.183	7.708	8.145	7.877	6.702	6.539	92.951	74.035	18.915
EVERGREEN LINE	5.162	7.556	5.769	6.194	5.533	7.032	7.350	5.731	6.617	5.049	5.760	4.360	72.113	50.865	21.248
HAPAG LLOYD	4.297	5.733	6.373	4.193	5.065	5.341	4.368	3.082	2.815	3.538	3.467	4.532	52.804	41.050	11.754
TAILWIND SHIP. LINES	3.932	3.403	902	1.576	3.602	3.680	3.545	3.805	2.525	4.215	7.457	3.275	41.918	21.574	20.344
ZIM	2.861	2.892	4.058	2.082	3.995	3.817	1.947	1.980	1.522	1.813	1.829	1.908	30.704	22.258	8.445
OOCL	2.223	2.704	2.601	2.614	2.080	2.514	2.813	2.861	3.049	2.818	2.368	2.040	30.685	28.790	1.895
ONE	317	532	740	462	491	299	254	397	1.133	973	1.058	1.179	7.834	6.974	860
HAMBURG SUD	146	157	412	281	263	472	271	101	82	26	0	0	2.211	2.211	0
YANG MING MARINE	286	188	280	271	196	222	177	167	44	164	51	125	2.171	1.663	508
GRIMALDI - SIOSA	83	30	6	10	0	8	0	0	0	0	0	3	140	47	93
TARROS					1	0	5	0	10	0	0	1	17	7	10
HMM									4	6	13	10	33	33	0
OTHER	0	5	0	2	0	0	0	0	0	0	1	10	18	11	7
ADMIRAL											279	1.275	1.554	954	600



# REGULAR RAILWAY CONTAINER SERVICES

	DESTINATION <span>D= daily, W=weekly</span>		SERBIA	Koper - Ljubljana - Belgrade (Adria Kombi)	3 W
SLOVENIA	Koper – Ljubljana – Celje – Maribor (Adria Kombi)	2 D	CROATIA	Koper - Ljubljana – Zagreb (Adria Kombi)	5 W
GERMANY	Koper – München (Adria Kombi)	3 W	AUSTRIA	Koper – Graz (Cargo Center Graz)	Up to 10 W
CZECHIA	Koper – Č.Trebova with antennas to Prague/Ostrava/Plzen (Metrans) – via Dunajska Streda	5 W		Koper – Villach – antenna to Vienna, Linz, Salzburg, Wolfurt (RCO/Adria Kombi)	Up to 6 W
	Koper – Ostrava (PKP - Terminal Paskov) dedicated	1 W		Vienna – Koper (Adria Kombi/RCO) dedicated	2 W
	Koper – Ostrava (Metrans – Terminal Senov) dedicated	2 W		Koper – Enns – Salzburg – Koper (SETG) with antenna to Wolfurt	2 W
	Koper – Nošovice (Adria Kombi/RCO)	4 W		Ybbs, Krems – Koper (Metrans) – export trains	2 W
	Koper - Dunajska Streda - Koper (Metrans) roundtrip trains With antennas to Ceska Trebova	7 W		Linz - Koper (Metrans) Export only	4 W
	Brno – Koper (Adria kombi/RCO) dedicated	2 W		Koper - Dunajska Streda - Koper (Metrans) roundtrip trains With antennas to Krems an der Donau	7 W
				Koper – Enns – Graz – Koper (TFG)	2 W
HUNGARY	Koper – Budapest (Adria Kombi/RCO Hungary)	9 W	POLAND	Koper – Wroclaw (Terminal Olesnica) – Ostrava (Baltic Rail)	2 W
	Koper – Budapest – Koper roundtrip trains (Metrans)	14 W		Koper – Wroclaw (Terminal Olesnica) – Katowice/Terminal Wlosienica (Baltic Rail)	2 W
SLOVAKIA	Koper - Žilina (Adria Kombi/RCO) dedicated	Up to 6 W		Koper – via Ostrava (CZ Terminal Senov) – South Poland roundtrip trains (Metrans)	7 W
	Koper - Žilina (Metrans) dedicated	3 W	ROMANIA	Koper – Budapest – Arad (Afluent Terminal)	3 W
	Koper – Bratislava – Terminal RCO (Adria Kombi/RCO)	4 W			
	Koper – Bratislava – Spap Terminal (PKP) roundtrip dedicated	2 W			
	Koper - Dunajska Streda - Koper (Metrans) roundtrip trains With antennas to Kosice, TIPP Žilina	14 W			



# CAR & RO-RO TERMINAL

Largest car terminal in the Mediterranean

Gateway for 25+ global car producers

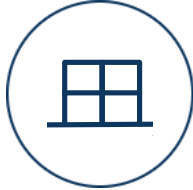
Import and Export volumes

More than 44.000 parking places





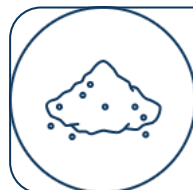
# PROJECT CARGO HANDLING



**HIGH & HEAVY, OOG CARGO HANDLING**



# GENERAL CARGO TERMINAL



Various bagged cargo





# DRY BULK & SILO TERMINAL



Flat stores for minerals

Flat stores for minerals

Silo for grain/cereals

Flat stores for soya

Flat stores for soya

Silo for alumina



# ROUTING OPTIMIZATION FOR A GREENER TRANSPORT

Koper vs Hamburg by sea. Comparison of CO2 emissions: transport of one 40' container (20 tons) from Port Said





# WHY IS THE PORT OF KOPER A VALID LOGISTIC ALTERNATIVE?



## RELIABLE OPERATIONS

- a single company operates all terminals
- synergy in operations
- quality, reliability, flexibility
- tailor-made services
- non-stop handling operations



## FAST AND SECURE PROCEDURES

- pre-clearing customs procedures
- entire port area is a customs bond area
- EU border inspection point; possibility of fiscal clearance and fiscal warehousing
- fiscal representation available and simple
- ISPS code compliant



## PORT COMMUNITY

- full support of the customs/control authorities
- Business-oriented customs personell, flexible working hours
- efficient IT support connecting the entire port community



## REFERENCES

trusted by important global corporations



## LOCATION

evident benefits of using shorter transport route (shorter transit times, lower transport costs, improved stock management, less CO2 emissions,...)



# TPG

**Thank You for Your attention**

**T.P.G. Agent**

Vojkovo nabrezje 30/a  
6000 Koper, Slovenia  
[www.tpgagency.si](http://www.tpgagency.si)