



**TPG EXPRESS**  
YOUR LOGISTICS

*Shipping  
your success*



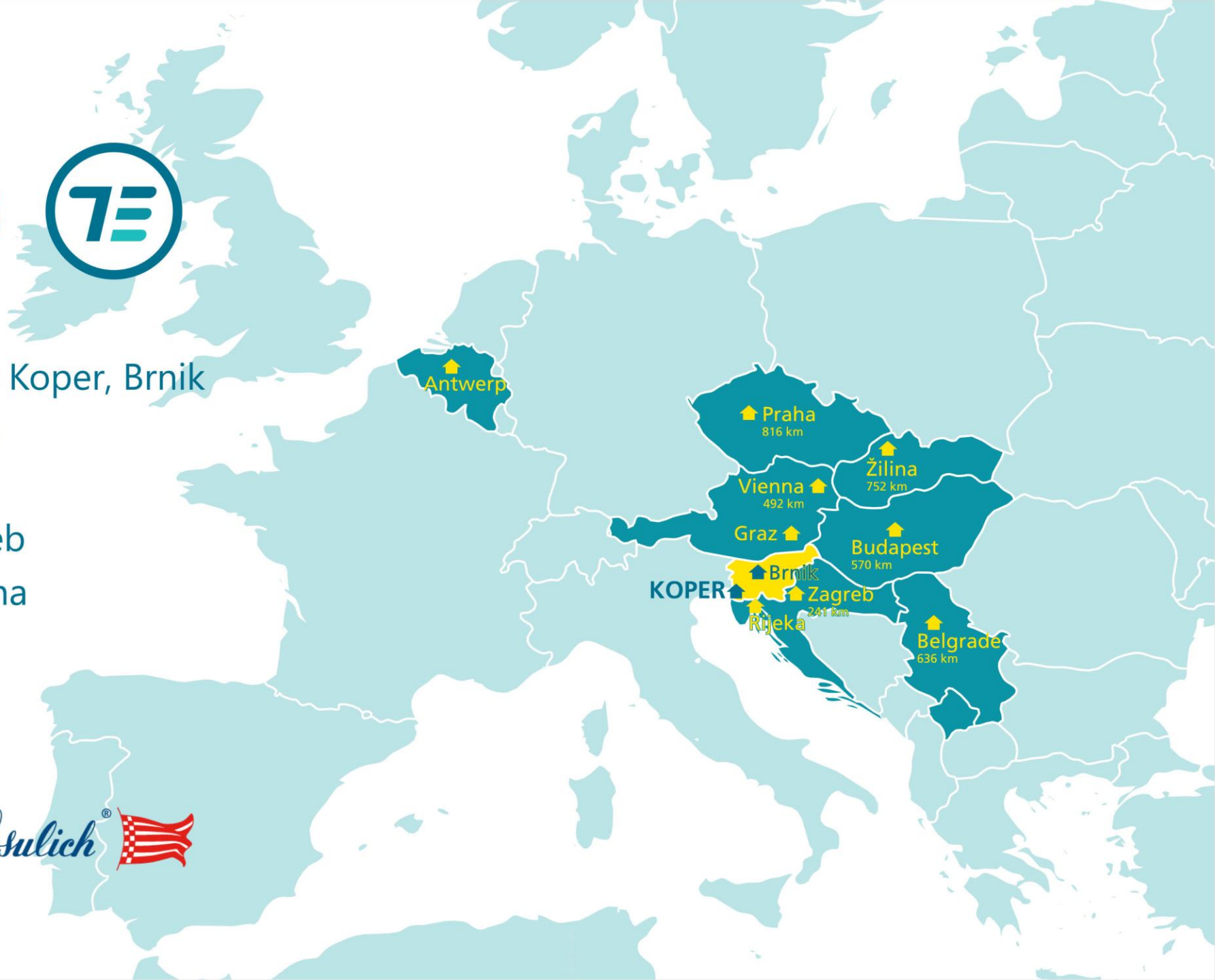


# OUR LOCATIONS



- **SLOVENIA** - head office Koper, Brnik
- **AUSTRIA** - Graz, Vienna
- **BELGIUM** - Antwerp
- **CROATIA** - Rijeka, Zagreb
- **CZECH REPUBLIC** - Praha
- **HUNGARY** - Budapest
- **SERBIA** - Belgrade
- **SLOVAKIA** - Žilina

We are part of *Fratelli Cosulich* 



# OUR BENEFITS



**20+ YEARS  
OF EXPERIENCE**  
in seafreight Logistics



**Market  
KNOW-HOW**



**150 (100 in Slovenia)  
PROFESSIONAL &  
DEDICATED STAFF**  
offering quick service



**IN-HOUSE**  
Customs clearances



**WAREHOUSING/  
MANAGING  
YOUR STOCK**



**INLAND  
DELIVERIES**  
by truck and rail





# CERTIFICATIONS and CUSTOMS



## ISO 9001:2015

Benefits of being certified to ISO 9001:2015:

- improved efficiency and customer satisfaction,
- addressing organizational risks and opportunities in a structured manner,
- consistently providing products and services that meet customer and regulatory requirements,
- enhancing customer satisfaction through the effective application of the system and processes for improvement and conformity assurance,
- more effective supply chain management.

## ISO 14001

Benefits of being certified to ISO 14001:

- enhanced environmental performance and sustainability,
- identification and management of environmental risks and opportunities,
- consistent compliance with environmental regulations,
- improved resource efficiency and waste reduction,
- strengthened commitment to environmental responsibility,
- enhanced reputation and stakeholder trust,
- cost savings through better environmental management,
- proactive approach to environmental challenges and continuous improvement in environmental performance.

# CERTIFICATIONS and CUSTOMS



## AEO

Benefits of AEO (Authorised Economic Operator) certification:

- admittance to customs simplification,
- fewer physical and documents control,
- reinforce safety and security,
- facilitate legitimate trade,
- harmonize and standardize the applications of customs controls,
- provide an electronic environment.

## IATA

IATA (International Air Transport Association) certification is an essential credential for freight forwarders. It signals that a freight forwarder:

- is up to date on the current industry standards and practices,
- has the necessary operational experience and safety records,
- can work on behalf of airlines in providing air cargo transport services.





# SERVICES



## OCEAN PRODUCT – FCL

Agreements with most common carriers:

- Maersk Line, Tailwind, MSC, CMA, COSCO, Hapag Lloyd, ONE, Evergreen, OOCL

Key Ports: Koper, Rijeka, Antwerp

For connection to the ports above we offer:

- **Intermodal** (rail-road) via container terminals in CEE region
- **Direct truck** (container, conventional)
- **Customs Clearance** – on each container terminal or issuing T1

## OCEAN PRODUCT – LCL

Don't have enough cargo for full container utilization, not a problem, we offer:

- Own consoles via Koper port to Israel, Cyprus, Jebel Ali & Middle East, Far East & Australia (via SIN)
- Own LCL console Ningbo – Koper (Tailwind service)
- Distribution from/to clients WHS
- Customs Clearance and T1





# SERVICES



## RAIL AGENCY KOPER

- With a team of 5 members dedicated to train-related agency in Koper, having successfully dispatched a total of 124 trains in 2024

## OVERLAND & WHS PRODUCT

- LTL and FTL transport
- Express deliveries with 2 drivers or smaller vehicles
- Container transport
- Steel coil transport with coil carriers
- Temperature controlled transport
- Exceptional transport
- ADR goods
- Bulk cargo with tipper / dumper trucks
- Consolidation and distribution / stuffing / stripping
- Warehouse in KOPER – customs bonded WHS / 5000 m<sup>2</sup> closed space

# SERVICES



## AIR PRODUCT

Dedicated teams in Vienna, Zagreb and Ljubljana office for CEE region

**Key Airports:** Belgrade, Frankfurt, Bratislava, Budapest, Ljubljana, Zagreb, Vienna

### We offer:

- Air Freight from/to
- Handling at each airport
- Distribution from/to
- T1 at each airport



# CARGO HANDLINGS ADVANTAGES

---

- 100% physically presence during all port manipulations (11 people)
- Working 24/7
- BIP (Border Inspection Point):  
Fitosanitary inspections, Customs clearance, Transit "T1"= 7 days/week
- Import customs clearance 24/7
- Storage area  
closed warehouses in different locations



**PORT HANDLING**

**STORAGE**

# TPG EXPRESS IN NUMBERS



**98.829**

Number of  
TEUs



**1272,34**

Avio tons



**17.818**

Number of  
FCL shipments



**17.394**

Truckings



**26.448**

Number of  
CBM/LCL shipments

**120 MIO EUR**

Turnover 2024



# NEW WAREHOUSE PROJECT KOPER

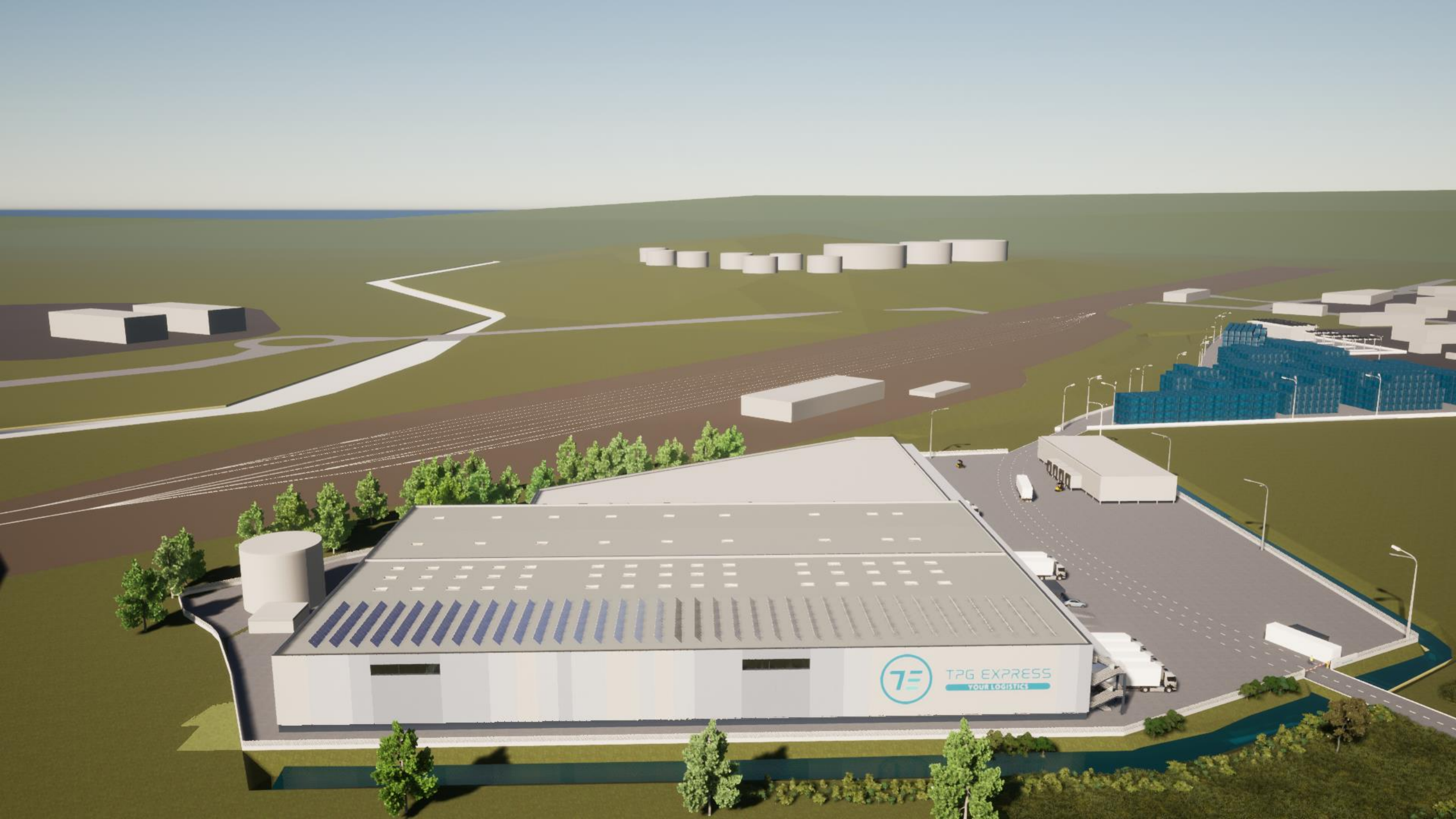
- 12.000 m<sup>2</sup> – closed WHS
- 5.000 m<sup>2</sup> – covered space
- 1.000 m<sup>2</sup> – reefer warehouse



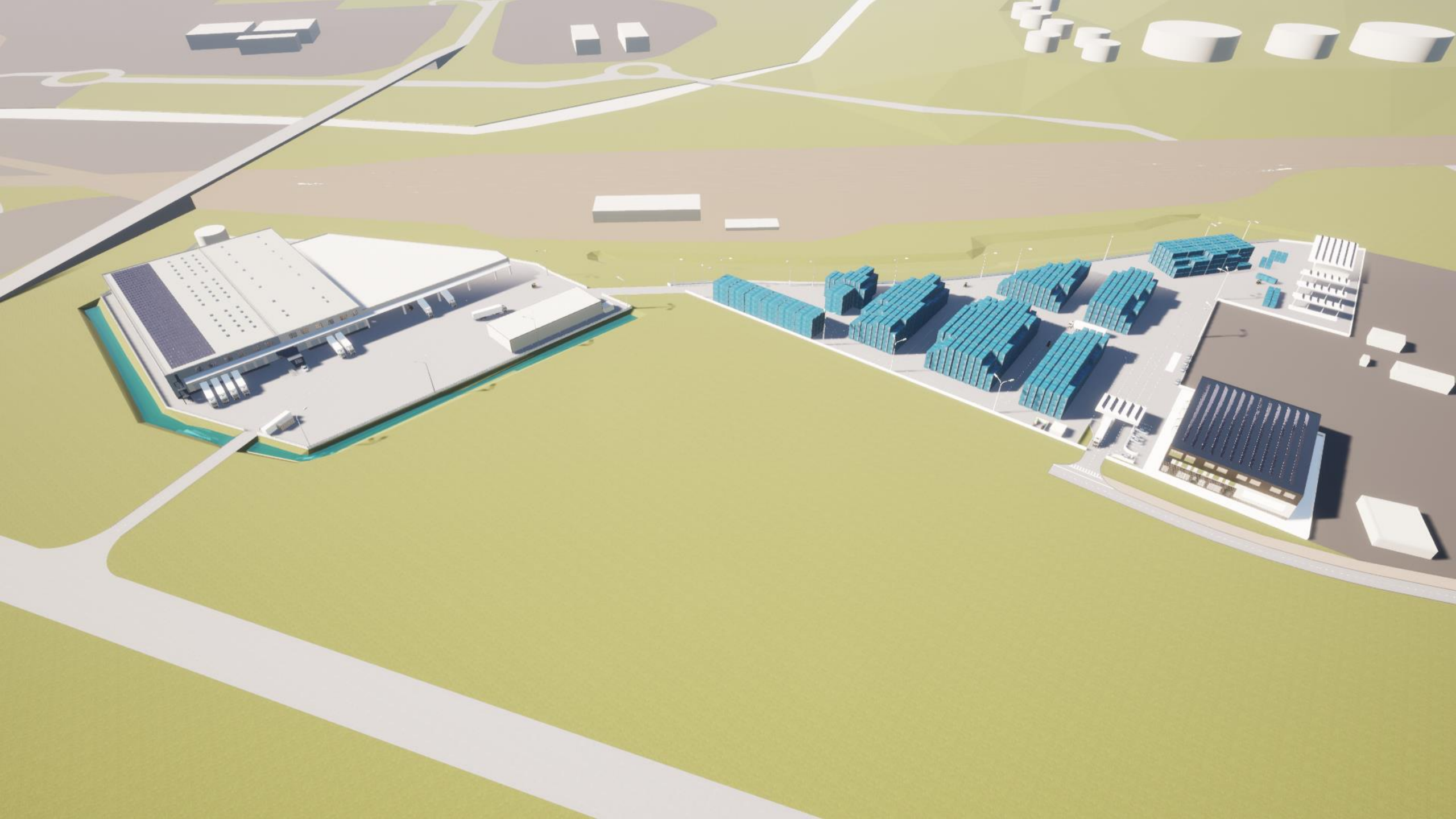
**TPG EXPRESS**  
YOUR LOGISTICS













# THANK YOU!

Trust, personal care  
and global presence!

